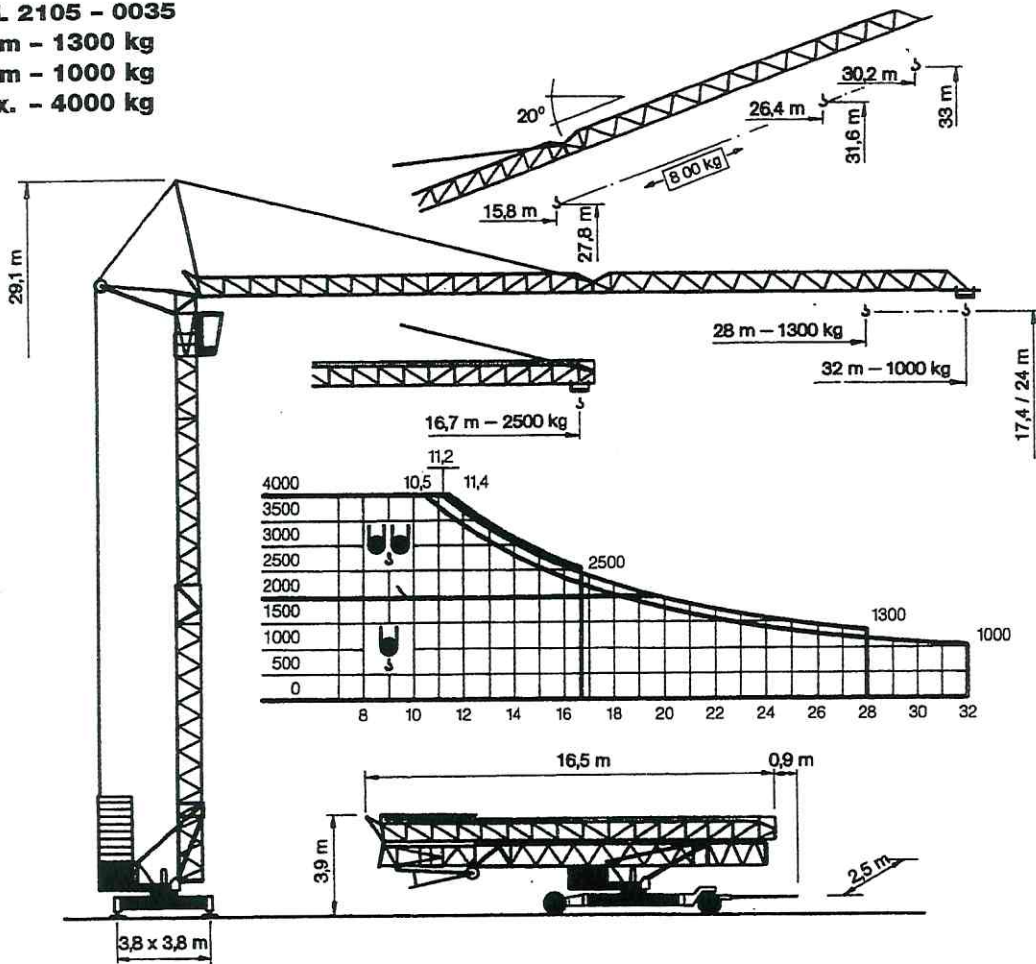


TK 3210/2

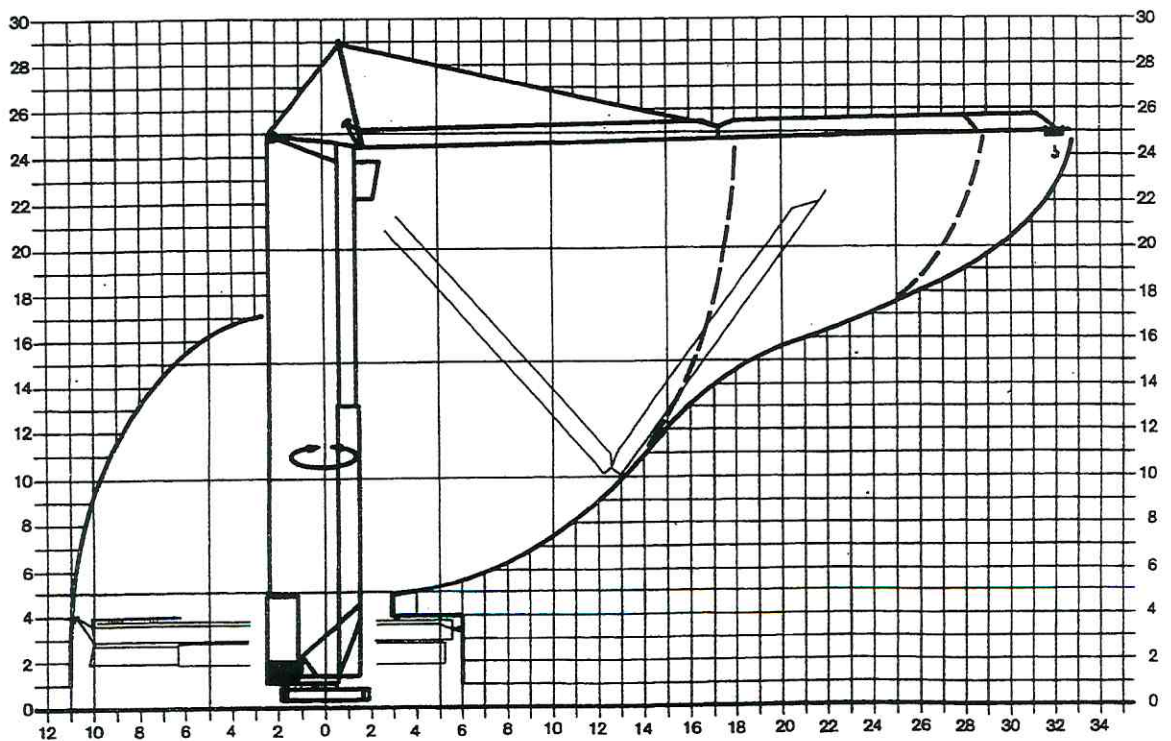
DIN 15018
 BGL 2105 - 0035
 28 m - 1300 kg
 32 m - 1000 kg
 max. - 4000 kg



Montage - Platzbedarfsdiagramm





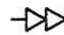




Erection - Space required diagram

Montage - Surface utile



TK 3210/2

Leistungsdaten Performance data Details techniques	Ausladung (m) Radius Portée	Tragkraft (kg) Lifting capacity Capacité	Max. Tragkraft (kg) Lifting capacity max. Capacité max.
Grundgerät Basic design / Flèche de base	28	1300	4000
Auslegerverlängerung Jib extension / Rallonge de flèche	32	1000	4000
Ausleger eingeklappt Jib unfolded / Flèche repliée	16,7	2500	4000

Geschwindigkeiten Speeds Vitesses	Heben Lifting Levage				
			m/min.	kg	m/min.
		46	1250	23	2500
		23	2000	11,5	4000
		5	2000	2,5	4000
	Katzfahren Trolley drive / Chariotage		m/min.	20/40	
	Kranfahren Travelling / Translation		m/min.	30	
	Drehen (stufenlos) Slewing / Rotation		U/min.	0,1 ↔ 1,0	

Allgemeine technische Daten

General technical data

Details techniques généraux

Konstruktionsgewicht Weight / Poids de la grue	kg	12.000	Ges. elektr. Leistung Motor power / Puissance totale	kW	21
Gegengewicht Counter weight / Contrepoids	kg	24.000	Kabelquerschnitt Cable section / Section du câble	mm ²	5 x 10
Max. Eckdruck max. wheel load / Pression max.	kN	200	Kabeltrommel Cable Drum / Enrouleur	m	54
Spurweite track gauge / Ecartement	m	3,8	Schienenprofil Rail profile / Profil du rail		S33-S49
Radstand wheel gauge / Voie	m	3,8	Netzstrom Mains supply / Réseau	V/Hz	400/50
Drehradius Slewing radius / Rayon de giration	m	2,5	*Gegengewicht CH Counter weight CH / Contrepoids CH		24.000 kg

Montage

Erection

Montage

